

## Upgrade Guidance for HD cameras

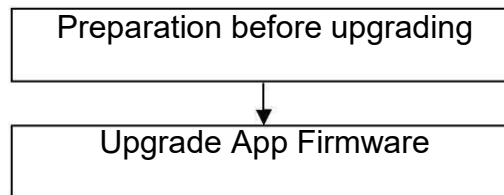
This firmware is suitable for cameras C1,C1 V2,C1-Lite,C1-Lite V2,FI9800P, FI9800P V2,FI9803P V2,FI9803P V3,FI9815P, FI9815P V2, FI9816P,FI9816P V2,FI9851P V2/FI9800W/FI9800E/FI9800XE. Please check your camera model on the bottom sticker. Updating with the wrong firmware could severely damage and/or break your camera.

**Note:**

System firmware 1.9.x.1x, App firmware 2.x.1.28, 2.x.1.30, 2.x.1.32, 2.x.1.36, 2.x.1.37 or 2.x.1.39, 2.x.2.5, 2.x.2.16, 2.x.2.33, 2.x.2.37, 2.x.2.41, 2.x.2.43, 2.x.2.43, 2.x.2.46, 2.x.2.47 can upgrade to this version.

**If camera's system firmware is lower than 1.9.3.16, please upgrade the "FosIPC\_E\_sys\_ver1.9.3.16.bin" first.**

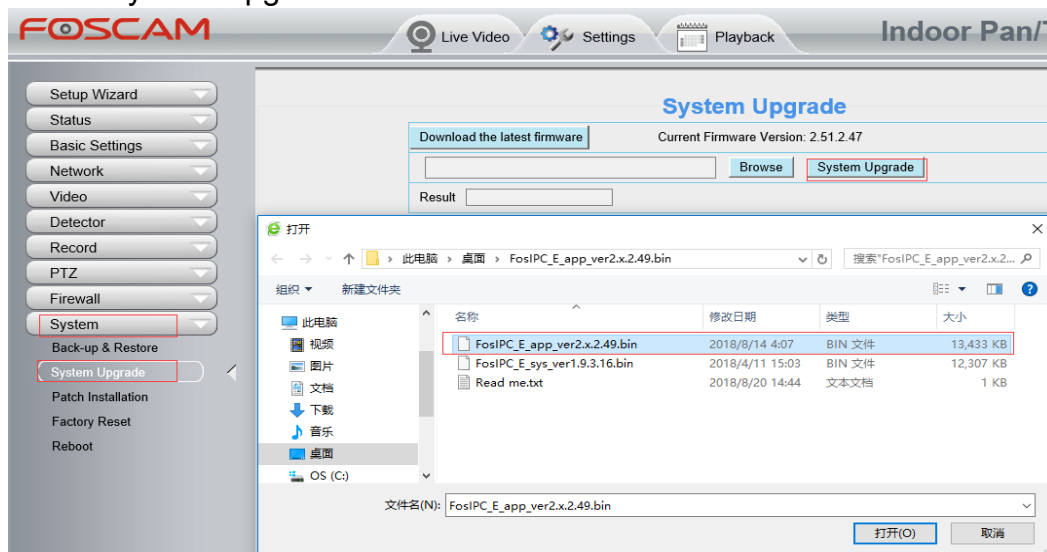
**If camera upgraded to this application firmware, it cannot be downgraded to previous firmware versions.**

**Preparation before upgrading:**

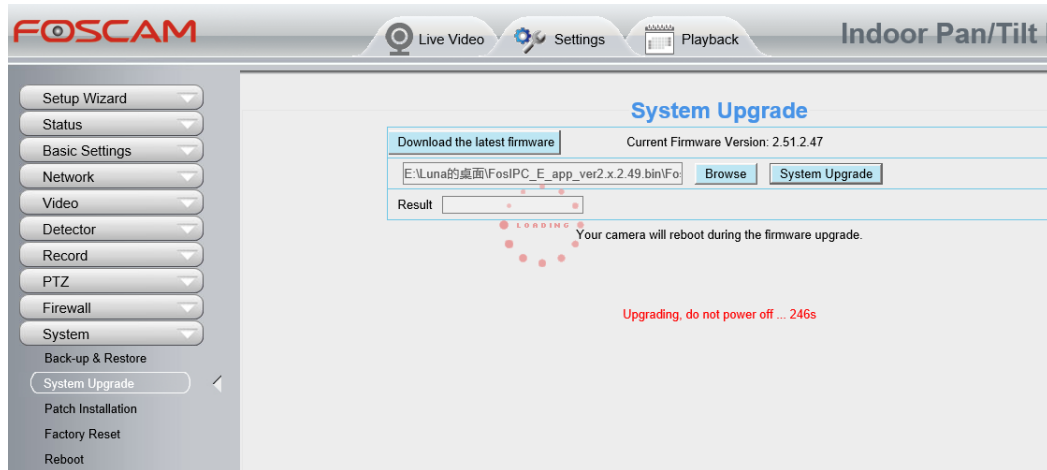
1. Please restart your camera before the upgrading;
2. Connect camera to router with an Ethernet cable before upgrading;
3. DO NOT upgrade firmware via wireless;
4. DO NOT upgrade firmware over Internet, just finish it in LAN;
5. Keep power on during the upgrading;
6. Unplug the SD card before upgrading;
7. Logging your camera as administrator first, upgrade firmware on web page.

**Operation 1: Upgrade the app firmware version.**

**Step 1:** Login again and go to Settings→System→System Upgrade.  
Click Browse→choose FosIPC\_E\_app\_ver2.x.2.49.bin→click Open  
→Click System Upgrade.



**Step 2: “Upgrading, do not power off ... Xs”** pop up, camera IP will disappear from the IP Camera Tool. **Then camera will reboot itself, DO NOT power off the camera, please wait till the camera IP reappear in the Equipment Search Tool.**



**Operation 2:** Login again to check the updated **System Firmware Version**, **Application Firmware Version** and **Plug-In Version**.

Device Information	
Refresh	
Camera Model	FI9816P
Camera Name	FI9816P
Camera ID	A0E338DADCC0
Camera Time	2010/01/01 00:30:59
System Firmware Version	1.9.3.18
Application Firmware Version	2.51.2.49
Plug-In Version	5.1.0.7

**Congratulations**, your camera successfully upgraded to the latest firmware!

**Note:**

You'd better re-install the plug-in, in case it does not upgrade.

**End**

--- by Foscam Technical Support Team