

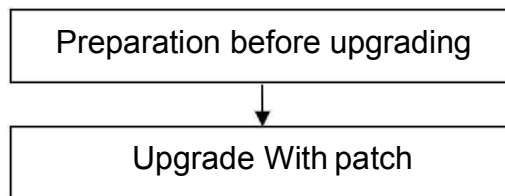
Upgrade Guidance for HD Cameras

This patch is only suitable for HD cameras FI9821W V2, FI9818W V2, FI9831W, FI9826W, FI9821P, FI9831P, FI9826P, FI9805W, FI9804W, FI9804P, FI9805E, FI9805P, FI9805EP.

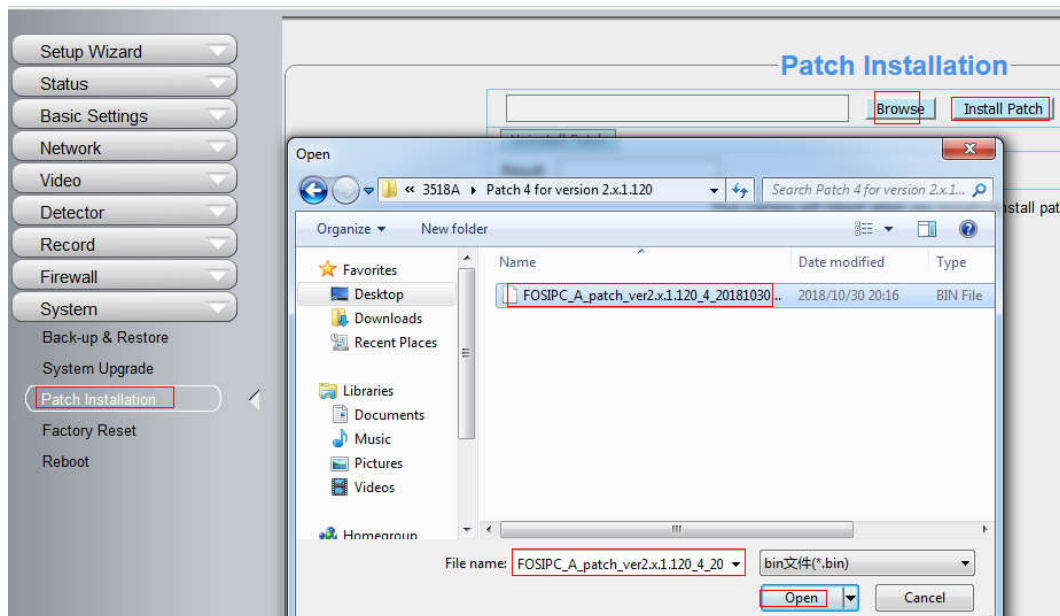
Note:

System firmware 1.4.1.10 and application firmware 2.x.1.120 can upgrade with this patch.

If your cameras has other firmware version, please upgrade to the correct firmware version first.

**Preparation before upgrading:**

1. **Please restart your camera before the upgrading;**
2. **Connect camera to router with an Ethernet cable before upgrading;**
3. **DO NOT upgrade firmware via wireless;**
4. **DO NOT upgrade firmware over internet, just finish it in LAN;**
5. **Keep power on during the upgrading;**
6. **Unplug the SD card before upgrading;**
7. **Logging your camera as administrator first, upgrade firmware on web page.**



Step: Please log in the camera and go to Settings→System→Patch Installation to upgrade with this patch.

--- By Foscam Technical Support Team