

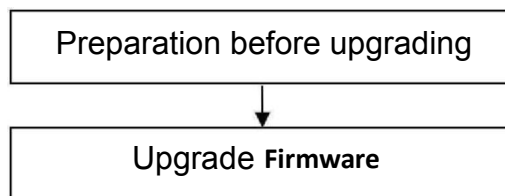
Upgrade Guidance for HD Cameras

This firmware is for HD cameras: FI9900P V7, please check your camera model on the sticker of the camera (different versions of one model share same firmware). Updating with the wrong firmware could severely damage and/or brick your camera. Please make sure the firmware is correct.

Note:

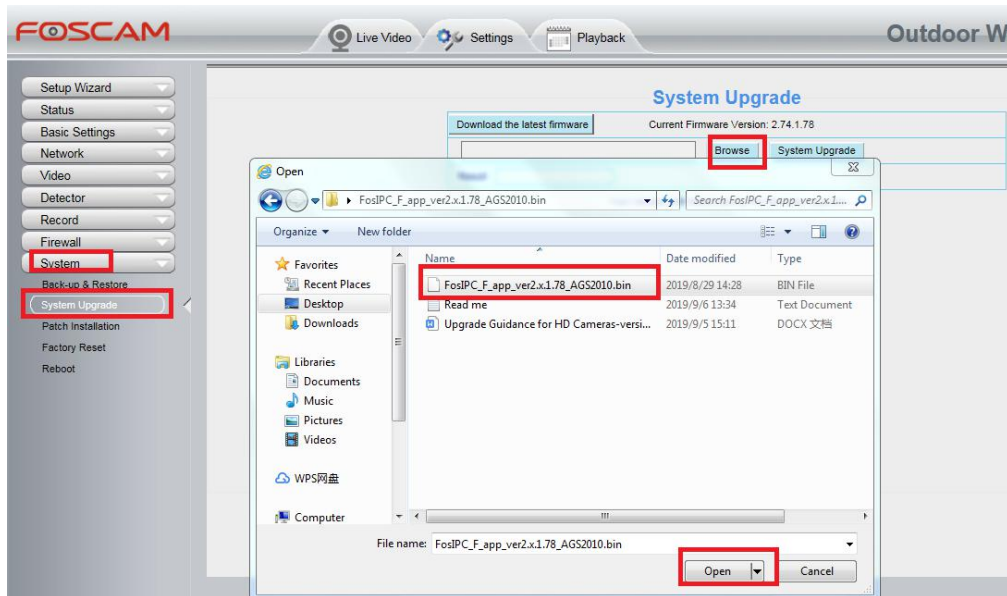
System firmware 1.11.1.14 and application firmware 2.x.1.76 can upgrade to this firmware.

If camera upgraded to this firmware, it cannot be downgraded to previous firmware versions.

**Preparation before upgrading:**

1. Please restart your camera before the upgrading;
2. Connect camera to router with an Ethernet cable before upgrading;
3. DO NOT upgrade firmware via wireless;
4. DO NOT upgrade firmware over internet, just finish it in LAN;
5. Keep power on during the upgrading;
6. Logging your camera as administrator first, upgrade firmware on web page.
7. Suggest to unplug SD card before upgrade.

Step: Login your camera, go to Settings-->System-->System Upgrade. Click Browse/Choose File, find the file [FosIPC_F_app_ver2.x.1.78_AGS2010.bin](#) you've extracted in your local hard driver, then click Open. Camera will upgrade after you click on System Upgrade



Login again to check if the System Firmware Version, Application Firmware Version and Plug-In Version upgrade correctly.

System Firmware Version	1.11.1.14
Application Firmware Version	2.74.1.78
Plug-In Version	5.1.0.13

End

--- By Foscam Technical Support Team